



WinMan Mobile

Wireless Warehouse Management System

Overview

WinMan Mobile is a wireless warehouse management system that extends the power of your WinMan ERP system throughout your stores.

It works by connecting warehouse workers via wireless handheld devices to your backend WinMan system where their activities are processed.

WinMan Mobile streamlines and automates every aspect of your inventory processing through an intuitive, flexible interface running on mobile computers.

The software, installed on the handheld device, guides the user through the relevant process before committing the transaction to the server for real-time processing. Communication between the unit and WinMan is handled using standard wireless networking. Barcode scanning can be utilised to ensure maximum speed and accuracy and the user interface is designed to be intuitive so minimal training is required.

Despatch manifests, cycle count information or receipt schedules can be allocated to the warehouse staff's handheld unit either automatically or by the warehouse manager. The warehouse staff are then guided through the operation; minimising downtime, maximising the efficiency of the stores and maintaining high customer support levels.

Benefits

Speed and Efficiency

WinMan Mobile makes the processing of warehouse operations like order despatch and receiving goods fast and accurate. Efficiency is increased by electronically transferring orders to the handheld units without the need for printed documentation.

Accuracy

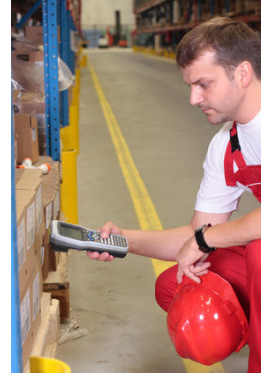
WinMan Mobile can utilise barcode scanning to accurately select the products and batches required while data entry errors are greatly reduced by processing the information directly to WinMan; removing the need for further data entry or replication of work.

Performance

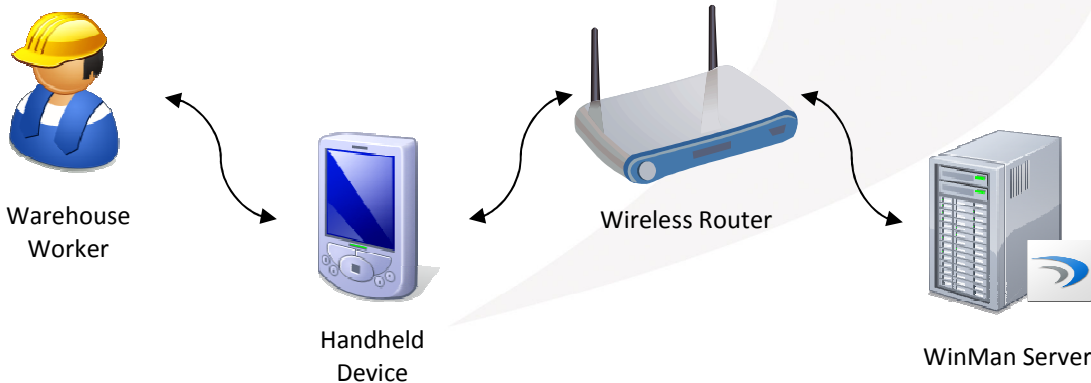
Paperwork in the warehouse can be virtually eliminated by pushing the data to the handheld unit rather than printing it. WinMan Mobile also allows you to streamline your workflow with jobs automatically allocated to the user, according to priority, so warehouse staff can move from one task to another more effectively.

Extensibility

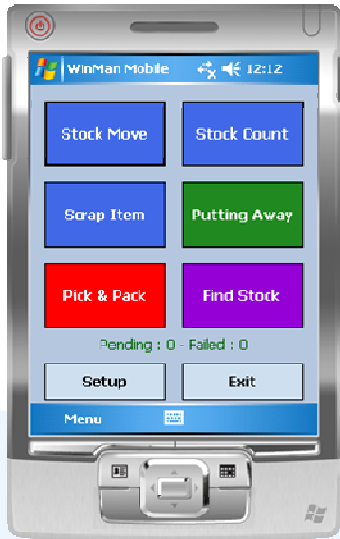
WinMan Mobile comes with many predefined warehouse operations but it doesn't end there. Its flexible scripting language allows you to customise the existing procedures or create new ones with ease.



Work more effectively, more accurately and faster with WinMan Mobile



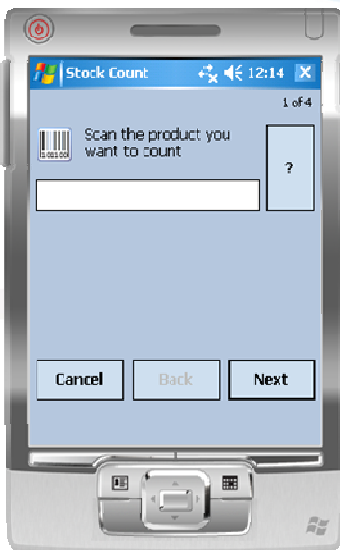
WinMan Mobile



The operations menu can be configured for each device and dynamically changed for each user according to their authorisation. A clear intuitive interface promotes ease of use.

WinMan Mobile comes with these common operations with many more available and a framework to create and customise your own.

- Goods received / Putting Away
- Picking & Packing
- Stock Take
- Cycle Counting
- Stock Location Transfer
- Product and Location Searches



A wizard interface takes you naturally and clearly through the necessary steps of the operation. Feedback is given if validation fails or additional information is required. Items are clear and can be selected even if you are wearing protective gloves.

Barcode scanning, RFID and searches ensure accurate and rapid entry of data.

Data is committed to the WinMan system in real-time for accurate business information without any latency.

Any paperwork required, despatch notes etc., can be automatically printed using the WinMan Mobile remote printing facility.



With support for barcode scanning WinMan Mobile can quickly and accurately process transactions



WinMan Mobile

System Requirements

- Hardware : Windows Mobile Handheld PC
- Operating System : Windows Mobile - Pocket PC 2003, 5 or 6 or Windows CE 4.2 or better
- Memory : 16Mb
- Wireless Infrastructure : Enterprise Class Wireless Access Points Supporting 802.11b/g

Wireless Site Survey

To ensure the best performance for WinMan Mobile we recommended a site survey of your wireless network within your deployment area. This will ensure that your access points are in the most optimal locations and that other radio emitters, which can cause interference, are kept to a minimum. We also suggest that you periodically perform site surveys of your wireless spectrum as performance can change over time.

Device Selection

Within your organisation, different users performing different operations may require different devices to maximise comfort, usability and productivity. For example, loading bay workers will need rugged devices that can tolerate wide temperature changes as workers move from outside to indoors, as well as rain, dust and even drops to the floor. Workers picking smaller items or handling packages could benefit from wearable scanners that allow the use of the hands. While workers on forklifts need mobile devices that can be mounted on the vehicle and are designed to handle persistent vibration. For everyday warehouse scanning operations Symbol's MC9000 range is recommended for heavy use and their MC50 range is a very capable device for lighter use.

Pricing

Each WinMan Mobile licence costs just £500 with maintenance costing £100 per year. Additional utilities may be written by us at our usual development rates.

Contacts

For more information or to order WinMan Mobile please contact:

Phone: +44 (0)121 749 8050
Email: sales@winman.co.uk
Web: www.winman.co.uk

SSL-WinMan
220 Fort Dunlop, Fort Parkway
Birmingham B24 9FD



Extend the power of WinMan to your warehouse workers